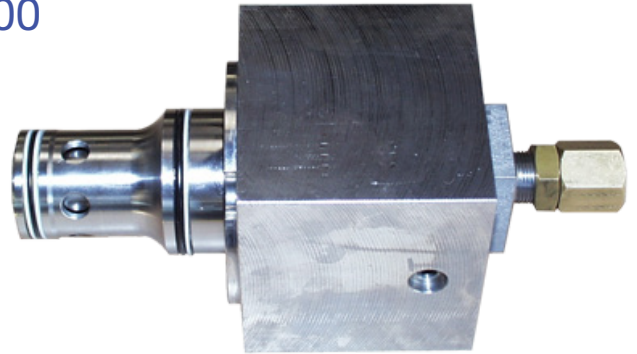


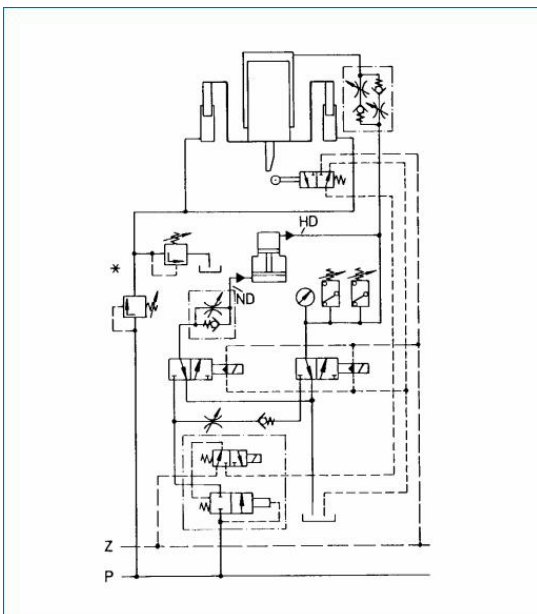
pressure control valve NW 6 to NW 100  
 for water and oil, max. 320 bar



TECHNICAL DATA

Special Features

Mounting example



\* pressure limiting valve

**NW 63**

Nennweite/In	10	16	25	32	40	50	63
L	415	445	445	445			
B1	45	45	45	45			
B2	45	45	45	45			
B3	25	25	25	25			
B4	16	25	32	32			
B5	16	25	32	32			
B6	16	25	32	32			
B7	16	25	32	32			
B8	16	25	32	32			
B9	16	25	32	32			
B10	16	25	32	32			
B11	16	25	32	32			
B12	16	25	32	32			
B13	16	25	32	32			
B14	16	25	32	32			
B15	16	25	32	32			
B16	16	25	32	32			
B17	16	25	32	32			
B18	16	25	32	32			
B19	16	25	32	32			
B20	16	25	32	32			
B21	16	25	32	32			
B22	16	25	32	32			
B23	16	25	32	32			
B24	16	25	32	32			
B25	16	25	32	32			
B26	16	25	32	32			
B27	16	25	32	32			
B28	16	25	32	32			
B29	16	25	32	32			
B30	16	25	32	32			
B31	16	25	32	32			
B32	16	25	32	32			
B33	16	25	32	32			
B34	16	25	32	32			
B35	16	25	32	32			
B36	16	25	32	32			
B37	16	25	32	32			
B38	16	25	32	32			
B39	16	25	32	32			
B40	16	25	32	32			
B41	16	25	32	32			
B42	16	25	32	32			
B43	16	25	32	32			
B44	16	25	32	32			
B45	16	25	32	32			
B46	16	25	32	32			
B47	16	25	32	32			
B48	16	25	32	32			
B49	16	25	32	32			
B50	16	25	32	32			
B51	16	25	32	32			
B52	16	25	32	32			
B53	16	25	32	32			
B54	16	25	32	32			
B55	16	25	32	32			
B56	16	25	32	32			
B57	16	25	32	32			
B58	16	25	32	32			
B59	16	25	32	32			
B60	16	25	32	32			
B61	16	25	32	32			
B62	16	25	32	32			
B63	16	25	32	32			
B64	16	25	32	32			
B65	16	25	32	32			
B66	16	25	32	32			
B67	16	25	32	32			
B68	16	25	32	32			
B69	16	25	32	32			
B70	16	25	32	32			
B71	16	25	32	32			
B72	16	25	32	32			
B73	16	25	32	32			
B74	16	25	32	32			
B75	16	25	32	32			
B76	16	25	32	32			
B77	16	25	32	32			
B78	16	25	32	32			
B79	16	25	32	32			
B80	16	25	32	32			
B81	16	25	32	32			
B82	16	25	32	32			
B83	16	25	32	32			
B84	16	25	32	32			
B85	16	25	32	32			
B86	16	25	32	32			
B87	16	25	32	32			
B88	16	25	32	32			
B89	16	25	32	32			
B90	16	25	32	32			
B91	16	25	32	32			
B92	16	25	32	32			
B93	16	25	32	32			
B94	16	25	32	32			
B95	16	25	32	32			
B96	16	25	32	32			
B97	16	25	32	32			
B98	16	25	32	32			
B99	16	25	32	32			
B100	16	25	32	32			

**Druckwerte**

Druckwerte	Typ	Druckstufe	Druckstufe
10	10-150bar	DRW-22352	
16	16-150bar	DRW-22353	
25	25-150bar	DRW-22354	
32	32-150bar	DRW-22355	
40	40-150bar	DRW-22356	
50	50-150bar	DRW-22357	
63	63-150bar	DRW-22358	

**Druck**

$\sqrt{R_{a0.025}}$

A = Absteckleitung  
 B = Abdruck  
 R = Abdruck +10 %

**Anschl. X**

Typ	Nennweite	NW	a	b	c	d1	d2	d3	d4	d5	d6	f1	f2	f3	f4	f5	f6	f7	f8	a	f	m1	m2	w	g	
DRW - 12352	10	10	50	100	100	100	100	100	100	100	100	100	100	100	100	100	100	100	100	100	100	100	100	100	100	100
DRW - 12353	16	16	50	100	100	100	100	100	100	100	100	100	100	100	100	100	100	100	100	100	100	100	100	100	100	100
DRW - 12354	25	25	50	100	100	100	100	100	100	100	100	100	100	100	100	100	100	100	100	100	100	100	100	100	100	100
DRW - 12355	32	32	50	100	100	100	100	100	100	100	100	100	100	100	100	100	100	100	100	100	100	100	100	100	100	100
DRW - 12356	40	40	50	100	100	100	100	100	100	100	100	100	100	100	100	100	100	100	100	100	100	100	100	100	100	100
DRW - 12357	50	50	50	100	100	100	100	100	100	100	100	100	100	100	100	100	100	100	100	100	100	100	100	100	100	100
DRW - 12358	63	63	50	100	100	100	100	100	100	100	100	100	100	100	100	100	100	100	100	100	100	100	100	100	100	100